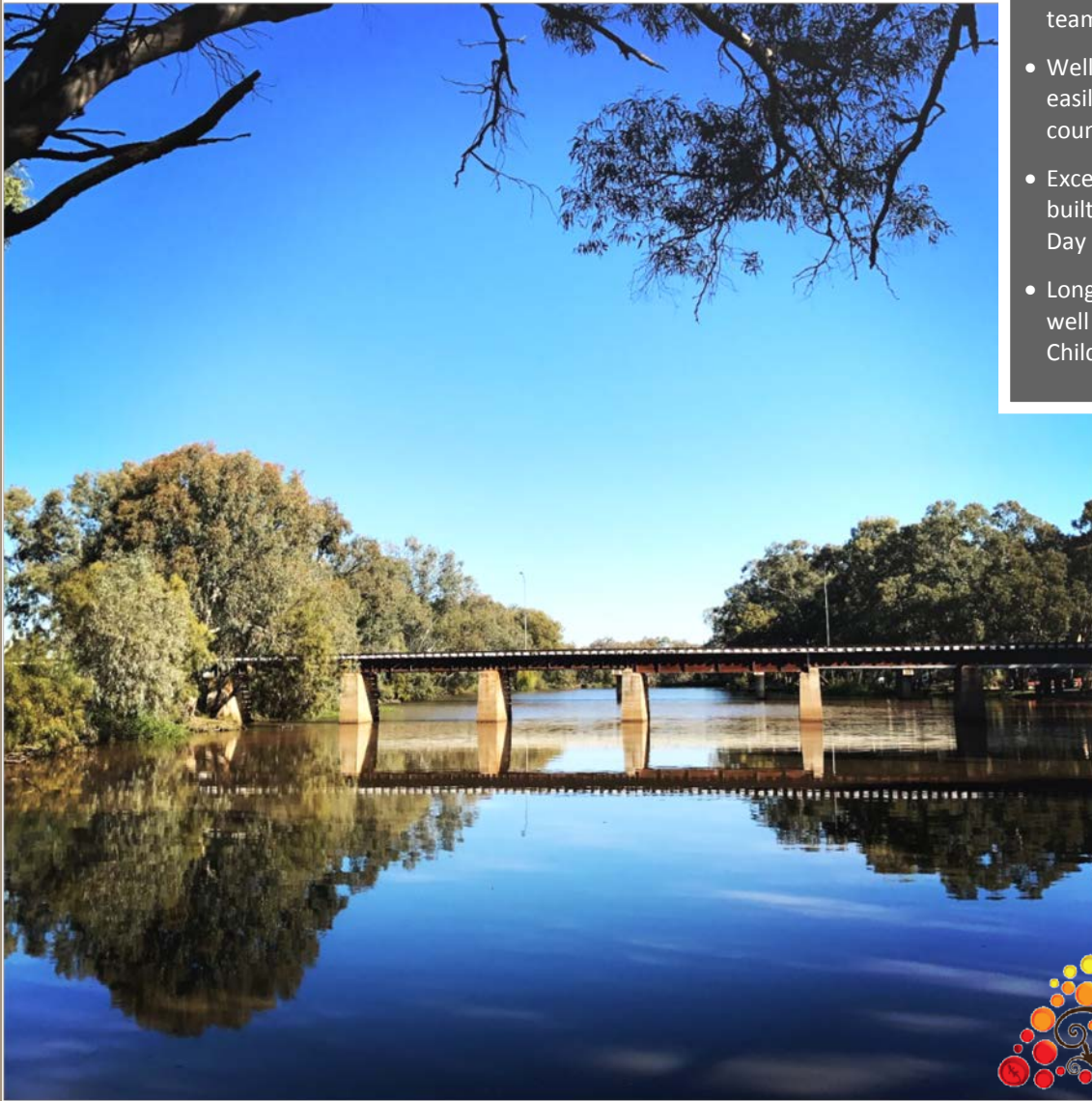


Manager Education and Community Services



- Centre hours Monday to Friday working with professional, supportive team
- Well-serviced, safe and easily accessible friendly country town
- Exceptional purpose built and accredited Long Day Care Centre
- Long established and well regarded Mobile Children's Service

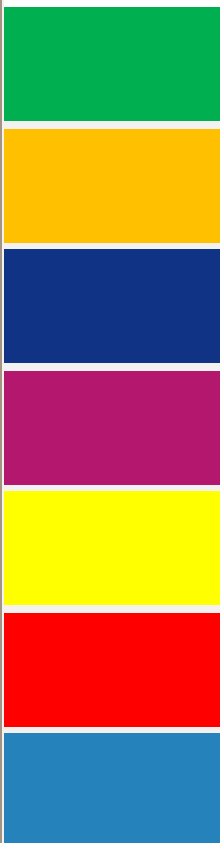


About Nyngan

The iconic town of Nyngan is located around 1½ hours from Dubbo in the centre of New South Wales. Nyngan is easily accessible by road and also, via Dubbo, by air with direct flights to Sydney, Melbourne, Brisbane and Newcastle. Situated in the centre of a prime agricultural, wool growing and mining region, Bogan Shire also hosts one of the largest solar farms in the Southern Hemisphere.

Nyngan is widely seen as attractive and safe and enjoys a strong community spirit contributing to a small town atmosphere. Nyngan enjoys a range of local services including a reputable long day care centre, preschool, two primary schools, a high school and a medical centre as well as a number of retail businesses, two supermarkets, cafes and clubs.

Nyngan provides a variety of sporting, recreation and lifestyle options that are the envy of many other communities. The Bogan River provides opportunities for recreational fishing, water skiing, enjoying the natural environment or just peace and quiet. Nyngan has many sporting and community organisations that are always looking to welcome new members.



Manager Education and Community Services

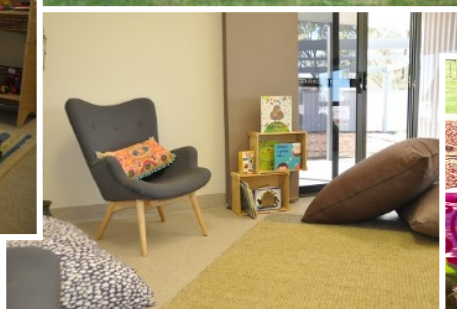


Early Learning Centre

- Long Day Care Service
- Built in 2016
- 43 Places
- 0-3 Room, 3-5 Room
- Meals freshly prepared by qualified cook

Bogan Bush Mobile

- Mobile Children's Service
- Visiting 11 venues in rural communities



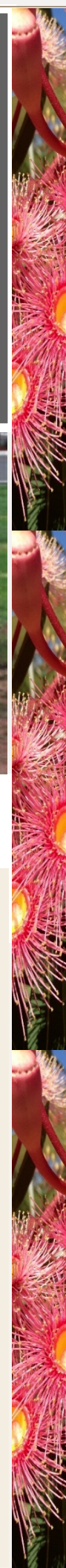
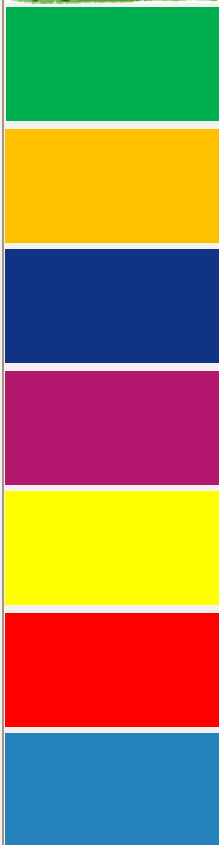
About the Bogan Shire Early Learning Centre and Bogan Bush Mobile Service

Welcome to Bogan Shire Children's Services, incorporating Bogan Bush Mobile Children's Service (BBM) and Bogan Shire Early Learning Centre (ELC). Access to quality childcare and education is well recognised for its potential power and influence on a child's development. BBM has been in operation since 1990 and is a mobile children's service visiting 5 LGA's and over 11 venues across the central and far west of NSW. BBM delivers play sessions and child care in remote communities fortnightly.

Our architecturally designed purpose built 43 place Long Day Care Centre (ELC), has been in operation for almost 3 years. It is through the provision of play and interaction with others that children learn about themselves and the world around them in a safe engaging environment. We believe that in supporting early years learning we are nurturing our future by providing real benefits for children and families within the Bogan Shire.

We embrace diversity and believe that by integrating families as indispensable partners in the learning community we will foster children's motivation to learn and reinforce their sense of themselves as competent learners.

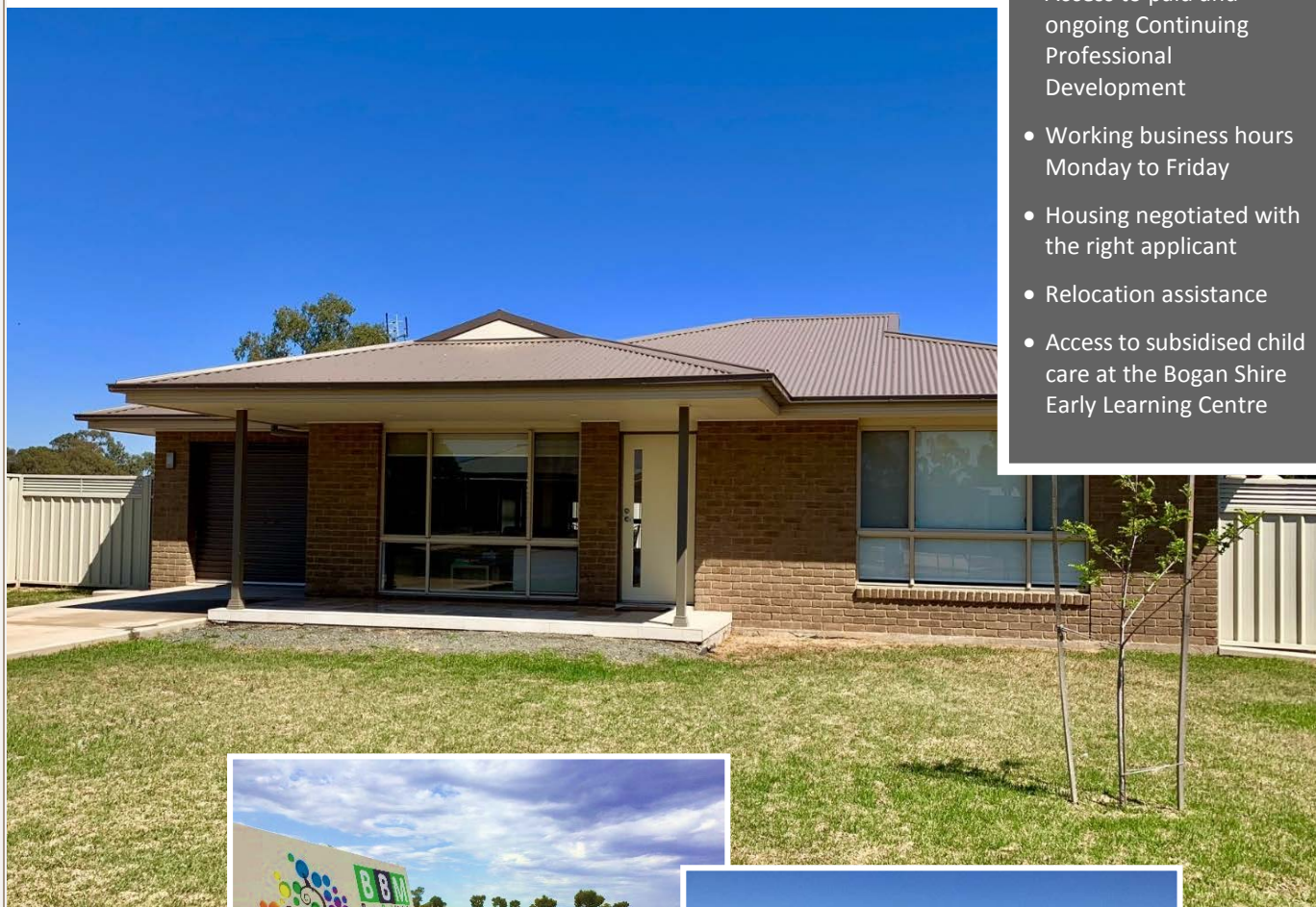
The highest quality of care and education is obtained through quality teaching, appropriate resources and strong family involvement. We value continuous professional development which is important to improve and build the service providing the best outcomes for children.



Manager Education and Community Services

Benefits include:

- Access to paid and ongoing Continuing Professional Development
- Working business hours Monday to Friday
- Housing negotiated with the right applicant
- Relocation assistance
- Access to subsidised child care at the Bogan Shire Early Learning Centre



About the position

The Manager Education and Community Services position primarily leads the operations of Children's Services by providing management expertise to the Bogan Bush Mobile and Long Day Care services and strong educational leadership to promote the implementation of the Early Years Learning Framework (EYLF) and fostering a high performing team.

The role will entail developing relationships that support and partner with families and communities, ensuring Children's Services are compliant with legislation, regulations and policies of Council, as well as implementing the *Quality Improvement Plan* and working towards exceeding the *National Quality Standard* for Early Education and Care.

The Manager Education and Community Services will also work closely with the Director People and Community Services in managing and delivering community services such as Library and Community Development.

The Manager Education and Community Services position is full time, 35 hours per week, Monday to Friday between 8.00am and 4.30pm, with the occasional requirement to work other hours between 7.00am and 6.00pm depending on the Early Learning Centre's operational needs.

